

2/2 Way Pneumatic Piston Operated Normally Open, Angle Seated Valves,

With Cylinder Actuator for On-Off Application
SCREWED BSP / NPT (F).

DATA SHEET
PV-6622E/6623E/6624E/6625E
BSP/NPT(F)

SPECIFICATIONS

Sizes : 15 mm (1/2") to 80 mm (3")

CONSTRUCTION

Body and Bonnet : Investment casted ASTM-A, 351CF8 (St.St. 304) CF8M St.St. 316) & CF3M (St.St.316L).

Pressure Temperature Rating : As per ANSI class 150.

End Connections : Standard BSP(F)/ NPT(F)

Seating : Soft seated Teflon

Optional : Viton/EPDM/Buna Nitrile.

Leakage : As per FCI 70-2, Teflon seating class IV. For other soft seating class VI Drop Tight/ Bubble Tight.

Trim : S.S. AISI 304/316.

Stem Packing : Self adjusting, Spring loaded Teflon packing.

Characteristics : On-Off, Normally Closed.

Working Fluid Pressure : Refer to table below.

Working Temperature : On steam-continuous 155°C Intermittent 180°C with Teflon seating, Buna Nitrile 80°C, EPDM 135°C, VITON 180°C.



ACTUATOR

Spring return type, Pneumatic Cylinder.

Cylinder Cover : S.S. AISI 304(deep drawn)

Cylinder Flange : Pressure die casted, Aluminium Silicon alloy, solution treated and hard anodised.

Piston : Steel (deep drawn).

Piston Packing : Buna Nitrile.

Actuator Spring : IS 4454 Grade III, duly painted.

Actuator Working : 3.5 to 5.5 bar, (Refer to Graph).

Signal Pressure

Operating Cycles per hour : 15mm, 20mm, 25mm upto 600 cy/hr. 35mm and 50mm upto 500 cy/hr.(Tested on Air, on other fluids, this figure may vary).For 65mm and 80mm upto 300 cy/hr.

Life Expectancy : Over one million cycles (lab tested in ideal condition).

Air Quality : Dry, filtered instrument grade.

Maximum Operating Pressure Differential : Refer to graph.

Accessory : Position indicating limit switch box, solenoid valve, filter regulator gauge. Other accessories available on application.

Application : For control of air, water, oil, gas, steam in textile, power generation, paper & pulp, chemical, petro chemical industries, PSA nitrogen system, air dryer, gas generator and others.

Back Pressure : All models Max. back pressure 2.5 bar.

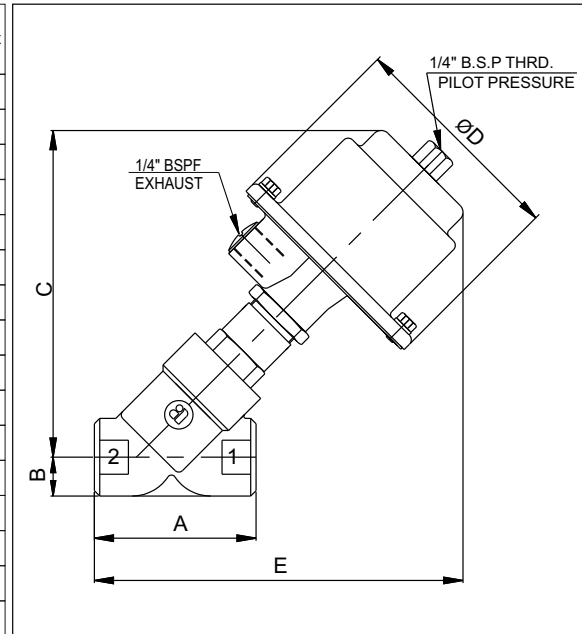
Instruction Manual : Refer to IM 6622E/6623E/6625E.

SPECIFICATION TABLE NORMALLY OPEN - (FLOW TO CLOSE, I.E. FLOW OVER THE SEAT)

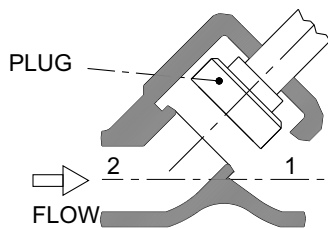
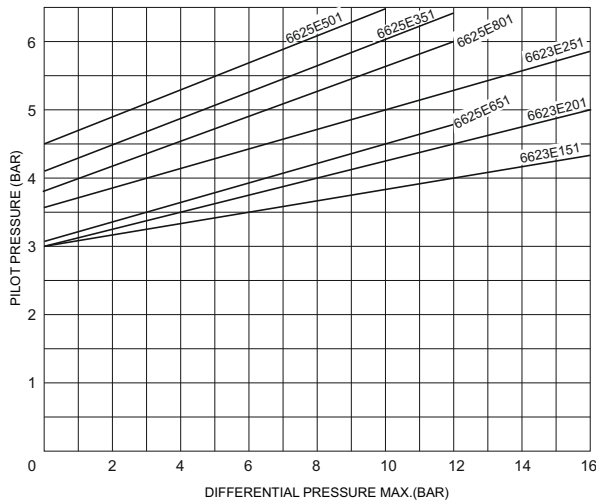
Catalogue Number	Size BSP (F)		orifice Size	Flow Factor Kv	Maximum Working Pressure	INLET POSITION	Safe Working Pressure	Actuator Type	Air Consumption
	Inch	mm	mm	m ³ /hr	bar		bar	Cy	litres/cy
6622E 151	1/2	15	16	4.3	16	FTC	16	70	0.150
6622E 201	3/4	20	16	5.4	16	FTC	16	70	0.150
6622E 251	1	25	23	13.6	16	FTC	16	70	0.160
6622E 351	1½	35	34	31.8	15	FTC	16	70	0.172
6622E 501	2	50	45	54.5	6	FTC	16	70	0.184
6622E 651	2½	65	65	70	12	FTC	18	130	0.772
6622E 801	3	80	76	89	12	FTC	18	130	0.772
NORMALLY OPEN - (FLOW TO OPEN, I.E. FLOW UNDER THE SEAT)									
6623E 151	½	15	16	4.3	16	FTO	16	70	0.150
6623E 201	3/4	20	16	5.4	16	FTO	16	70	0.150
6623E 251	1	25	23	13.6	16	FTO	16	70	0.160
NORMALLY OPEN - (FLOW TO CLOSE, I.E. FLOW OVER THE SEAT)									
6624E351	1 ½	35	34	31.8	16	FTC	16	100	0.329
6624E501	2	50	45	54.5	10	FTC	16	100	0.329
NORMALLY OPEN - (FLOW TO OPEN, I.E. FLOW UNDER THE SEAT)									
6625E 351	1½	35	34	31.8	12	FTO	16	100	0.329
6625E 501	2	50	45	54.5	10	FTO	16	100	0.329
6625E 651	2½	65	65	70	12	FTO	18	130	0.772
6625E 801	3	80	76	89	12	FTO	18	130	0.772

DIMENSIONS (IN MM)

Model	SIZE		A	B	C	D	E	Weight
	Inch	mm						
6622E151	1/2	15	63.5	16.8	155	103.5	174	0.150
6622E201	3/4	20	75	18.0	160	103.5	180	0.150
6622E251	1	25	90	21.5	165	103.5	190	0.160
6622E351	1 1/2	35	125	29.0	180	103.5	216	0.172
6622E501	2	50	150	35.0	190	103.5	235	0.184
6622E651	2 1/2	65	183.5	44.0	370	178	395	0.772
6622E801	3	80	220	50.0	393	178	435	0.772
6623E151	1/2	15	63.5	16.8	155	103.5	174	0.150
6623E201	3/4	20	75	18.0	160	103.5	180	0.150
6623E251	1	25	90	21.5	165	103.5	190	0.160
6624E351	1 1/2	35	125	29.0	180	138	216	0.310
6624E501	2	50	150	35.0	190	138	235	0.329
6625E351	1 1/2	35	125	29.0	180	138	216	0.310
6625E501	2	50	150	35.0	190	138	235	0.329
6625E651	2 1/2	65	183.5	44.0	370	178	395	0.772
6625E801	3	80	220	50.0	393	178	435	0.772

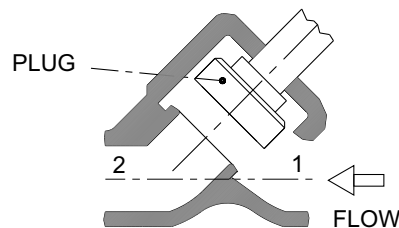
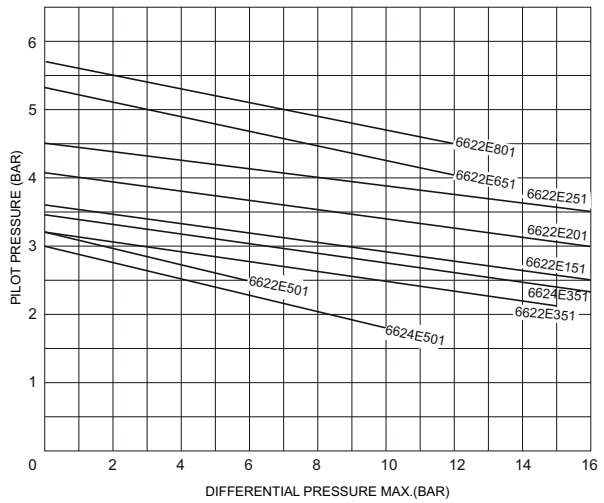


6623E/6625E



NORMALLY OPEN-FLOW TO OPEN PLUG
CAT. NO. 6623E / 6625E
(FTO)

6622E/6624E



NORMALLY OPEN-FLOW TO CLOSED PLUG
CAT. NO. 6622E / 6624E
(FTC)

Note:

Technical specifications, details & dimensions are subject to change without prior notice.
Dimensions in the table are approximate subject to final confirmation by AVCON.