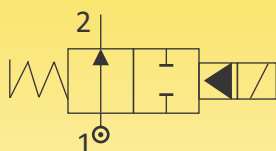


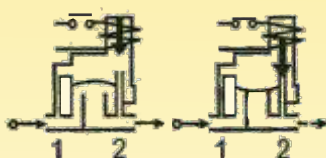
SOLENOID VALVES FOR AUTOMATION

2/2 WAY – NORMALLY OPEN – INTERNAL PILOT OPERATED, WITHOUT MANUAL OVERRIDE

SERIES 113A



N.O.
Normally Open
 Coil de-energised - Open
 Coil energised - Closed



NOTE: For your requirement of valves with Flameproof Enclosure, please refer to catalogue no. 9120F.

General Description:

Series 113A Solenoid Valves are Diaphragm Pilot Operated and require very low minimum differential pressure to operate. Valves are used on application with High Flow Rate. Valves are suitable for general application with media such as Water, Light Oil, Gas and Air, provided they are compatible with construction material of the valve.

End Connection:

'G'-ISO-228 (BSP) & NPT.

Max Temperature Range:

Working temperature for media is (-)5°C & Max. with Buna Nitrile Diaphragm: 80 °C and with Viton diaphragm upto 140 °C. Max. ambient temperature with Class 'H' coil (+)42°C.

Mounting Bracket:

Mounting Bracket available as accessory.

Body
Material

Coil:

Series 113A Solenoid Valves are available in Class 'H' insulated (180°C) coil; encapsulated in Thermo Plastic, containing 40% Glass fibre. All coils are for continuous service, 100% duty (E.D). Rated voltage tolerances for all AC Coils ±10%/-5% and for DC Supply Coils +10%/-5%. Coils are suitable for Connectors Form 'A' (ISO4400) according to EN 175301-803 and Protection Class IP 65 as per IEC-60529-2001.

Installation:

Valves can be mounted in any position except "Inverted", preferably in horizontal pipeline with magnetic construction in vertical and upright position.

Series 113A Solenoid valves are not designed for Back Pressure coming from downstream side.

Approvals:

IP-65 As per IEC-60529-2001, Coil M-36-SQ: 220/230V 50/60 Hz, 240 50/60Hz, 110 50/60 Hz & 24V DC.

Material:

Valve Body : Brass stamping to IS 6912 (3/8" & 1/2"),
 : ASTM A351 Gr.CF8 (SS304),
 Optional: ASTM A351 Gr.CF8M
 Seals (Seating) : Buna Nitrile or Viton
 Tube Nut : AISI 316 St.St.,
 Plunger & Stopper : AISI 430FR St.St.,
 Spring : AISI302 St.St.
 Shading Ring : For AC: Copper/Al/Silver, For DC: No shading ring.
 Coil Type : AC – M36-SQ/GP/H, 240, 110 V 50 Hz, Rating:18 VA, DC – M36-SQ/GP/H, 24 VDC, Rating: 12 Watts.

NOTE : (1) Manual override not available.
 (2) Use of fine gauge filter in the inlet side is highly recommended.

SPECIFICATIONS:

Series	Size G'thr	Orifice mm	Kv M ³ /hr.	Body Material		Seat		BTP bar	Working Pr.(bar)		Coil Type	Coil Rating		Constr. Ref. No	Weight kgs
									min	max		VA	Watt		
113A	Inch	mm	M ³ /hr.					bar	min	max		~	=		
10	3/8	15	3.0	BR	CF8	BN	V	25	0.3	12	M36-SQ	18	12	591	0.530
15	1/2	15	3.0	BR	CF8	BN	V	25	0.3	12	M36-SQ	18	12	591	0.560
20	3/4	20	8.0	-	CF8	BN	V	25	0.3	12	M36-SQ	18	12	591	0.880
25	1	25	9.5	-	CF8	BN	V	25	0.3	12	M36-SQ	18	12	591	0.930
35	1 1/2	35	30	-	CF8	BN	V	25	0.3	10	M36-SQ	18	12	591	1.650
50	2	50	37.5	-	CF8	BN	V	25	0.3	10	M36-SQ	18	12	591	2.850



NOTE: Valves suitable for AC and DC supply are different in characteristics and construction. No Interchanging of coils between DC to AC or AC to DC possible. DO NOT INTERCHANGE COILS. Minimum details required for submitting offer: Size, Body material, seating, medium name, Flow (M3/hr), pressure (bar), temp. Deg.C, coil voltage AC or DC.,Quantity (Nos), etc.