

# 2/2-Way Pilot Operated, Flanged Diaphragm Type, Solenoid Valves.

DATA SHEET  
9160K  
9162K

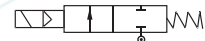
9160K - Normally Closed, Energised To Open,  
9162K - Normally Open, Energised To Close.

## SPECIFICATIONS:

Sizes	: 25 mm to 150 MM	25 mm to 100 mm
End Connections	: Flanged to ASA 150 RF, Optional-Drilled to other standard.	
Face to Face	: As per DIN 3202 Part 1 Series F1	
Body Material	: SGI (DI) IS 1865-400/15 Stainless Steel Seat.	WCB/CF8/CF8M, Stainless Steel Seat
Body Test Pressure	: 15 Bar (Refer to table below)	29 Bar.
Max.Wkg.Pressure	: 10 Bar (Refer to table below).	
Seat Material	: Std. Buna Nitrile, Optional - Hytrel.	
Sleeve & Piston	: SS ASTM A351 Gr.CF8.	
Core Tube	: St.St.304/St.St.316.	
Plunger/Stopper	: St.St.430FR.	
Spring	: St.St.302.	
Shading Ring	: Copper.	
Temp.(ambient)	: 42Deg.C	
Max.Wkg.Temp.	: (-)5 to 90Deg.C.	
Voltage (AC)	: 230, 110, 48, 24 V, 50/60 Hz.	
(DC)	: 220, 110, 24, 12.	
Enclosures	: General Purpose (IP20). Weatherproof- RD-WP-67. Flameproof-RD-FLP-IIC+WP67.	
Approvals	: KLPL/PESO/CE/ATEX/BIS.	
Differential Pr.	: 0.6 to 10 bar (Refer to table below).	
Coil Insulation	: Class 'H' upto 155Deg.C.	
Fluids	: Air,Water,Gas,Light Oil.	
Manual Override	: Available for 9160K valve,Normally Closed. Not available for 9162K valve,Normally Open.	
Sales Point	: Flanged Valve body, reliable and build around modular concept.	
Application	: Textile processing machinery, Sugar machinery, Silo fluid station, Dust suppression wherever dependable on-off type control is required.	
Mounting	: In horizontal pipeline, keeping solenoid upright and vertical.	
Note:	: 1) Use of Filter in the inlet side is highly recommended. 2) Hytrel diaphragms are manufactured in-house with our proprietary formulas. 3) For DC Valves - No Shading ring, For AC Valves - Aluminum, Optional - Silver shading ring available. 4) Not suitable for back pressure from outlet side.	

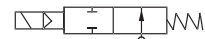


## SPECIFICATION TABLE 2/2 WAY NORMALLY CLOSED



Catalogue Number	Pipe Size	Orifice Size	Flow Factor Kv	Minimum Pressure	Maximum Operating Pressure (bar)						BTP	Material	Constr. Ref.	VA Rating	Watt Rating	Coil	Housing
					AC			DC									
					Air/Gas	Water	Light Oil	Air/Gas	Water	Light Oil							
9160K255	1	25	11	0.6	10	10	10	10	10	10	15	SGI BN	32.1	18	12	M45.1	SQ
9160K405	1 1/2	35	23	0.6	10	10	10	10	10	10	15	SGI BN	32.1	18	12	M45.1	SQ
9160K505	2	50	39	0.6	10	10	10	10	10	10	15	SGI BN	32.1	18	12	M45.1	SQ
9160K655	2 1/2	63	46	0.6	10	10	10	10	10	10	15	SGI BN	161	36	22	M50	SQ
9160K755	3	76	64	0.6	8	8	7	7	7	7	15	SGI BN	161	36	22	M50	SQ
9160K1005	4	94	101	0.6	5	5	5	5	5	5	15	SGI BN	161	36	22	M50	SQ
9160K1505	6	146	230	0.6	4	4	4	4	4	4	15	SGI BN	161	36	22	M50	SQ

## 2/2 WAY NORMALLY OPEN



9162K255	1	25	11	0.6	10	10	10	10	10	10	15	SGI BN	32.1	18	12	M45.1	SQ
9162K405	1 1/2	35	23	0.6	10	10	10	10	10	10	15	SGI BN	32.1	18	12	M45.1	SQ
9162K505	2	50	39	0.6	10	10	10	10	10	10	15	SGI BN	32.1	18	12	M45.1	SQ
9162K655	2 1/2	63	46	0.6	10	10	10	10	10	10	15	SGI BN	161	36	22	M50	SQ
9162K755	3	76	64	0.6	8	8	7	7	7	7	15	SGI BN	161	36	22	M50	SQ
9162K1005	4	94	101	0.6	5	5	5	5	5	5	15	SGI BN	161	36	22	M50	SQ
9162K1505	6	146	230	0.6	4	4	4	4	4	4	15	SGI BN	161	36	22	M50	SQ

## ELECTRICAL REFERENCE

Coil Type	Power Consumption & Watt Rating			Class of Insulation	Protection	Certification Standard
	AC		DC			
	VA Inrush	VA Holding	Watts			
M 45.1 SQ	25	18	12	H	GP/WP IP-67	IS/IEC 60529-2001
M 50 SQ	50	36	22	H	GP/WP IP-67	IS/IEC 60529-2001
M 45.1 RD	25	18	12	H	GP/WP IP-67	IS/IEC 60529-2001
M 50 RD	50	36	22	H	GP/WP IP-67	IS/IEC 60529-2001
M 45.1 FLP IIC	25	18	12	H	FLP-IIC-IP-67	IS/IEC 60079-1-2014
M 50 FLP IIC	50	36	22	H		

## DIMENSIONS IN (MM)

Catalogue Number		Pipe Size Inch	Constr. Ref.	A DIN 3202	B	C	ØD	Weight (Approx.)
Normally Closed	Normally Open							Kgs. ♦
9160K255	9162K255	1	32.1	160	54	148	105	5.300
9160K405	9162K405	1 ½	32.1	200	64	166	135	7.900
9160K505	9162K505	2	32.1	230	76	173	160	12.200
9160K655	9162K655	2 ½	161	290	89	198	180	18.800
9160K755	9162K755	3	161	310	96	192	200	23.600
9160K1005	9162K1005	4	161	350	115	228	225	40.000
9160K1505	9162K1505	6	161	480	140	268	316	55.000

CONSTRUCTION REF. NO.: 32.1				CONSTRUCTION REF. NO.: 161			

Catalogue Number		Pipe Size Inch	Constr. Ref.	E (RADIALLY)			F			G (APPROX.)		
Normally Closed	Normally Open			RD GP	RD WP	FLP	RD GP	RD WP	FLP	RD GP	RD WP	FLP
9160K255	9162K255	1	32.1	60	96	96	48	62	80	135	143	213
9160K405	9162K405	1 ½	32.1	60	96	96	48	62	80	153	161	231
9160K505	9162K505	2	32.1	60	96	96	48	62	80	160	168	238
9160K655	9162K655	2 ½	161	66	96	96	57	68	80	189	194	259
9160K755	9162K755	3	161	66	96	96	57	68	80	183	188	253
9160K1005	9162K1005	4	161	66	96	96	57	68	80	219	224	289
9160K1505	9162K1505	6	161	66	96	96	57	68	80	259	264	329

♦ Weight with SQ enclosure only, ask AVCON for other weights.

### Note:

Technical specifications, details & dimensions are subject to change without prior notice. Dimensions in the table are approximate subject to final confirmation by AVCON.

Ed. 9160/62K-01-2023