

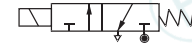
3/2-Way Compressor Loading and Unloading Solenoid Valves.

DATA SHEET
9331B

9331B - Normally Closed, Energized To Open With Side Manual Override.

SPECIFICATIONS

Sizes	: 1/4" (6 mm).
End Connections	: Standard-G-ISO-228(BSP-F). Optional - NPT.
Body Material	: SS ASTM A351 Gr.CF8/CF8M
Body Test Pressure	: 40 Bar (Refer to table below).
Max.Wkg.Pressure	: 20 Bar (Refer table below).
Seat Material	: For Air, water, gas - Neoprene, For Oil-PTFE.
Core Tube Nut	: St.St.304/St.St.316.
Plunger/Stopper	: St.St.430FR.
Spring	: St.St.302.
Shading Ring	: Copper Or Aluminium.
Temp.(ambient)	: 42Deg.C.
Max.Wkg.Temp.	: (-)5 to 80Deg.C.
Voltage (AC)	: 230, 110, 48, 24 V - 50/60 Hz.
(DC)	: 24, 110, 240 V.
Enclosures	: General Purpose (IP20). Weatherproof-RD-WP-67. Flameproof-RD-FLP-IIC+WP67.
Approvals	: KLPL/PESO/CE/ATEX/BIS.
Differential Pr.	: 0 to 20 bar (Refer table below).
Coil Insulation	: Class 'H' upto 155Deg.C.
Fluids	: Air, Gas, Oil.
Manual Override	: Available from Side.
Sales Point	: New valve developed for ease of manual override for compressor loading & unloading.
Application	: For compressor loading & unloading.
Mounting	: In horizontal pipeline, keeping solenoid upright and vertical.
Note	: 1) Use of Filter in the inlet side is highly recommended. 2) Not suitable for back pressure from outlet side.



SPECIFICATION TABLE

Catalogue Number	Pipe Size Inch	Orifice Size mm	Flow Factor Kv M ³ /hr.	Minimum Pressure bar	Maximum Operating Pressure (bar)						BTP bar	Material		Constr. Ref.	VA Rating		Watt Rating DC	Coil Type	Housing
					AC			DC				Body	Seat		AC	DC			
					Air/Gas	Water	Light Oil	Air/Gas	Water	Light Oil									
9331B015	1/4	1.5	0.07	0	20	18	8	20	18	8	40	CF8	BN	526	36	22	M50	GP	

ELECTRICAL REFERENCE

Coil Type	Power Consumption & Watt Rating			Class of Insulation	Protection	Certification Standard
	VA Inrush	VA Holding	DC Watts			
M50 RD	50	36	22	H	GP/WP IP-67	IS/IEC 60529-2001
M50 FLP IIC	50	36	22	H	FLP-IIC IP-67	IS/IEC 60079-1-2014

DIMENSIONS IN (MM)

Catalogue Number	Pipe Size Inch	Constr. Ref.	E (RADIALLY)			F			G (APPROX.)		
			SQ WP	RD WP	FLP	SQ WP	RD WP	FLP	SQ WP	RD WP	FLP
9331B015	1/4	526	--	96	96	--	68	80	--	116	152

Note:

Technical specifications, details & dimensions are subject to change without prior notice. Dimensions in the table are approximate subject to final confirmation by AVCON.