

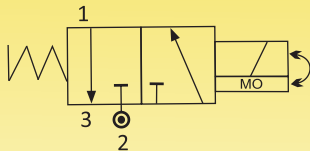


SOLENOID VALVES FOR AUTOMATION



3/2 WAY – NORMALLY CLOSED – DIRECT ACTING SOLENOID VALVE, WITH MANUAL OVERRIDE.

SERIES R312B

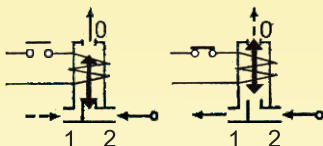


N.C.

Normally Closed

Coil energised - Open

Coil de-energised - Closed



General Description:

Series R312B Solenoid Valves are Direct Acting, available in Normally Closed Type and do not require minimum pressure to operate. Valves are used in general applications where small overall dimensions and low power consumption is required. Valves are applicable on media such as Air, Nitrogen, Inert Gas, etc. provided are compatible with construction material of the valve.

End connection: 'G'-ISO-228 (BSP) & NPT.

Max. Temperature range: For media is (-)5°C & Max. with Buna Nitrile seating: 80°C. Viton seating: 140°C. Max. ambient temperature with Class 'H' coil (+)42°C.

Manual override: Valve is provided with Lockable / Resettable Manual override. Valve can be operated manually to open the valve when there is No Electric supply to the coil. Manual Override consist of slotted head screw for Screw Driver with Two possible position to Open the valve and Close the valve. Manual Override is to be positioned at Close Position when valve is operated through coil.

BEFORE ATTEMPTING ELECTRICAL OPERATION: CHECK THE MANUAL OVERRIDE IS AT CLOSE POSITION.

Mounting Bracket: Mounting Brackets are available as accessory.

Application: For Operating Diaphragm Control Valves, Pneumatic Cylinders, Piston Type Valves, etc.

Coils: Series R312B Solenoid Valves are available in Class 'H' insulated (180°C) coil; encapsulated in Thermo Plastic, containing 30% Glass filled. All coils are for continuous service for intermittent 100% duty (E.D). Rated voltage tolerances are +10%/-15% for all AC power coils; +10%/-15% for DC supply. SQ-Coils are suitable for Connectors Form 'A' & 'B' (ISO4400) according to EN 175301-803 and Protection Class IP 67 as per IEC-60529-2001.

Approvals: M36 Coils are CE, EMI/ EMC approved. Available for voltage range 220/230/240/110/48/24V 50/60Hz AC and 220/110/24 V DC. For approval information, please refer to page no.46.

Materials:

Valve Body : ASTM A351 Gr.CF8 (SS304)
ASTMA 351 Gr.CF8M (SS316)
Seals (Seating) : Buna Nitrile / Viton.
Tube Nut : AISI SS 316.
Plunger & Stopper : AISI SS 430FR,
Spring : AISI SS 302.
Shading Ring : For AC: Copper/Silver,
For DC: No shading ring.
Standard Coil Type : AC-M36-SQ: 240, 110 V
50 Hz, Rating: 14 VA,
DC-M36-SQ: Rating: 10.5
Watts.

NOTE

- 1) Use of fine gauge filter in the inlet side is highly recommend.
- 2) Do not install bigger size of Solenoid Valve on smaller size pipeline.

Installation: Valves can be mounted in any position except "Inverted", preferably in Horizontal pipeline with magnetic construction in vertical and upright position.

Series R312B Solenoid valves are not designed for Back Pressure coming from down stream side.

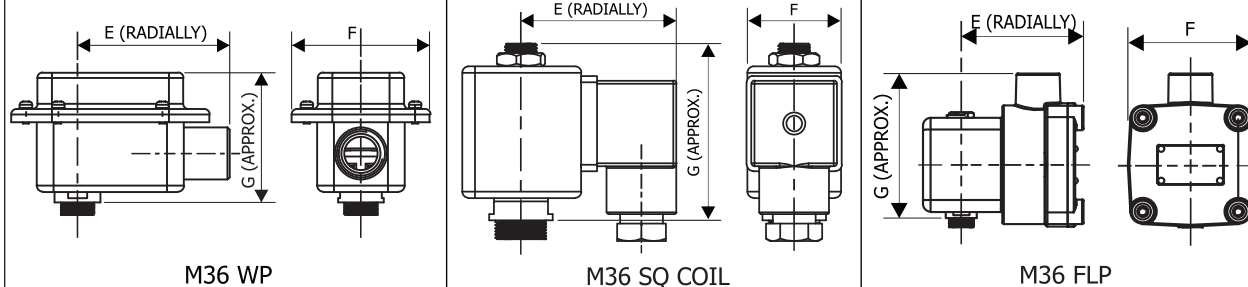


SPECIFICATIONS:

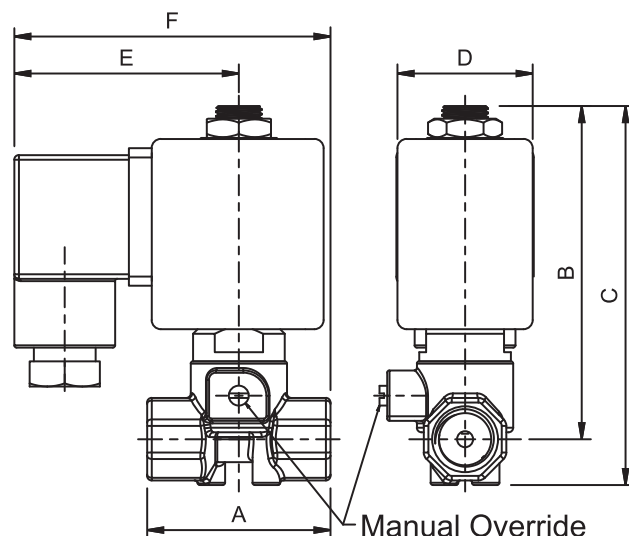
Series	Size 'G' thr	Orifice Size	Flow Factor Kv	Body Material	Seat	BTP	Working Pr.(bar)		Coil Type	Coil Rating		Constr. Ref. No	Weight kgs
							min	max		VA	Watt		
R312B	Inch	mm	M ³ /hr.			bar							
1506	1/4	1.5	0.06	CF8	BN	V 16	0	15	M36-SQ	14	10.5	723	0.285
2206	1/4	2.2	0.12	CF8	BN	V 16	0	7.5	M36-SQ	14	10.5	723	0.285
3006	1/4	3.0	0.13	CF8	BN	V 16	0	6	M36-SQ	14	10.5	723	0.285
3306	1/4	3.3	0.14	CF8	BN	V 16	0	5.5	M36-SQ	14	10.5	723	0.285
3506	1/4	3.5	0.15	CF8	BN	V 16	0	3.5	M36-SQ	14	10.5	723	0.285

NOTE: Valves suitable for AC and DC supply are different in characteristics and construction. No Interchanging of coils between DC to AC or AC to DC possible. DO NOT INTERCHANGE COILS. Minimum details required for submitting offer: Size, Body material, seating, medium name, Flow (M3/hr) pressure (bar), temp. Deg.C, coil voltage AC or DC., Quantity (Nos), etc.

COIL TYPE	POWER CONSUMPTION & WATT RATING			Class of Insulation	Protection	Certification Standard
	AC		DC			
	VA Holding	Watts	Watts			
M36-SQ-GP/SQ-WP67	13.5	8	10.5	H	GP/WP-IP-67	IS/IEC 60529-2001
M36-RD/WP67	13.5	8	10.5	H	WP-IP-67	IS/IEC 60529-2001
M36-RD/FLP-IIC + IP66/IP67	13.5	8	10.5	H	FLP-IIC+IP66/IP67	IS/IEC 60079-1-2014



CONSTRUCTION REF. NO.: 723



List Of Approvals							
APPROVAL	IP 67	TYPE 4X, 6P	Exd mb IIC T6 Gb	Exia IIC T6	Exd Tb IIC T6 Gb	DGMS	PESO
IS	<		<	<	<		<
CE	<		<		<		<
UL							
GOST							
IECEX			<		<		
ATEX			<		<		

DIMENSION IN MM.

CATALOGUE NO.	Size (Inch)	A	B	C	D	E	F
R312B1506	1/4	40	82	92	30	49	69
R312B2206	1/4	40	82	92	30	49	69
R312B3006	1/4	40	82	92	30	49	69
R312B3306	1/4	40	82	92	30	49	69
R312B3506	1/4	40	82	92	30	49	69

CATALOGUE NO.	PIPE SIZE	CONSTR. REF.	E (RADIALLY)			F			G		
			SQ	RD WP	FLP	SQ	RD WP	FLP	SQ	RD WP	FLP
			M36	M36	M36	M36	M36	M36	M36	M36	M36
1506	1/4	723	49	73	80	30	67	62	56	58	78
2206	1/4	723	49	73	80	30	67	62	56	58	78
3006	1/4	723	49	73	80	30	67	62	56	58	78
3306	1/4	723	49	73	80	30	67	62	56	58	78
3506	1/4	723	49	73	80	30	67	62	56	58	78

Note:

Technical specifications, details & dimensions are subject to change without prior notice.
Dimensions in the table are approximate subject to final confirmation by AVCON.

Office At.:
PUNE (BR)
NEW DELHI (BR)
KOLKATA (BR)
CHENNAI (BR)
BANGALORE (BR)
HYDERABAD (BR)
BARODA (BR)
MUMBAI (BR)

Contact No.:
08390902673
09810915079
09831904444
08939312809
08431256574
07995086416
08511119967
09810015079