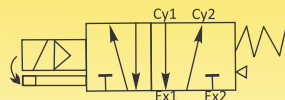


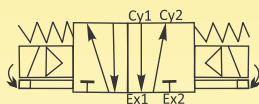
SOLENOID VALVES FOR AUTOMATION

4-WAY, 5-PORT, 2/3-POSITION, SINGLE SOLENOID AND DOUBLE SOLENOID; ALL PORTS BLOCKED. ALSO INLET PORT CLOSED OTHER PORTS FULLY OPEN, PILOT OPERATED POOL TYPE VALVES WITH M36 COILS. ALSO AVAILABLE WITH RD-WP-67, RD-FLP-IIC+IP66 METALLIC ENCLOSURE.

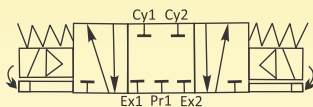
SERIES R465E-R466E-R467E-R468E



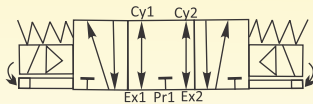
R465E



R466E



R467E



R468E



R465E



R466E-R467E-R468E

General Description:

Series R465E, R466E, R467E & R468E Solenoid Valves are Pilot Piston Operated type Valves, requires very low minimum pressure differential to operate. Valves are used on application where high flow rate is required. Valves are suitable for general application with media such as Air, Gas, etc., provided they are compatible with construction material of the valve.

End Connection: 'G'-ISO-228 (BSP) &NPT

Max Temperature Range:

For media – Minimum (-)5°C and maximum with Buna Nitrile seals is 80°C. Max. ambient temperature with Class 'H' coil (+)42°C.

Manual Override:

Valve is provided with Lockable / Resettable Manual override. Valve can be operated manually to open the valve when there is no Electric supply to the coil. Manual Override consist of slotted head screw of screw Driver with Two possible position to Open the Valve and Close the valve. Manual Override is to be positioned at Close position when valve is operated through coil.

BEFORE ATTEMPTING ELECTRICAL OPERATION: CHECK THE MANUAL OVERRIDE IS AT CLOSE POSITION.

Mounting Bracket : Mounting Brackets are available as accessory.

Application: For Operating Diaphragm Control Valves, Pneumatic Cylinders, Piston Type Valves, etc.

Coils:

Series R465E, R466E, R467E & R468E Solenoid Valves are available in Class 'H' insulated (180°C) coil; encapsulated in Thermo Plastic, containing 30% Glass filled. All coils are for continuous service duty, 100% (E.D). Rated voltage tolerances are +10%/-15% for all AC power coils; +10%/-15% for DC supply. SQ-Coils are suitable for Connectors Form 'A' & 'B' (ISO4400) according to EN 175301-803 and Protection Class IP 67 as per IEC-60529-2001.

Approvals:

M36 Coils are CE, EMI/EMC approved. Available for voltage rang 220/230/240/110/48/24V 50/60Hz AC and 220/110/24 V DC. For approval information, please refer to page no.74.

Material:

Valve Body	: Aluminium Bar Stock, Hard Anodized.
Seals/Poppets	: Buna Nitrile.
Tube Nut	: Brass.
Plunger & Stopper	: AISI SS 430FR:
Spring	: AISI SS 302.
Shading Ring	: For AC: Copper
	DC: No shading ring.
Standard Coil Type	: AC -M36-SQ: 240, 110V 50Hz, Rating : 14VA
	DC-M36-SQ: Rating : 10.5 Watts.

NOTE

- 1) Use of fine gauge filter in the inlet side is highly recommend.
- 2) Do not install bigger size of Solenoid Valve on smaller size pipeline.

Installation : Valves can be mounted in any position except "Inverted", preferably in Horizontal pipeline with magnetic construction in vertical and upright position. Series R465E, R466E, R467E & R468E Solenoid valves are not designed for Back Pressure coming from downstream side.

SPECIFICATIONS: SINGLE SOLENOID

Series	Pipe Size	Orifice Size	Flow Factor Kv	Body Material	Seating	BTP	Working Pr.(bar)		Coil Type	Coil Rating		Constr. Ref.	Weight
							min	max		VA	Watt		
R465E	Inch	mm	M ³ /hr.			bar				~	=		Kgs
R465E06	¼	06	0.6	AL-HE30	BN	16	2	10	M36-SQ	14	10.5	737	0.57
R465E10	¾	10	1.0	AL-HE30	BN	16	2	10	M36-SQ	14	10.5	737	0.67
R465E15	½	15	1.5	AL-HE30	BN	16	2	10	M36-SQ	14	10.5	737	0.77

SPECIFICATIONS: DOUBLE SOLENOID

Series	Pipe Size	Orifice Size	Flow Factor Kv	Body Material	Seating	BTP	Working Pr.(bar)		Coil Type	Coil Rating		Constr. Ref.	Weight
							min	max		VA	Watt		
R466E	Inch	mm	M ³ /hr.			bar				~	=		Kgs
R466E06	¼	06	0.6	AL-HE30	BN	16	2	10	M36-SQ	14	10.5	738	0.57
R466E10	¾	10	1.0	AL-HE30	BN	16	2	10	M36-SQ	14	10.5	738	0.77
R466E15	½	15	1.5	AL-HE30	BN	16	2	10	M36-SQ	14	10.5	738	0.87

SPECIFICATIONS: DOUBLE SOLENOID 3 POSITION, ALL PORTS BLOCKED VALVE

Series	Pipe Size	Orifice Size	Flow Factor Kv	Body Material	Seating	BTP	Working Pr.(bar)		Coil Type	Coil Rating		Constr. Ref.	Weight
							min	max		VA	Watt		
R467E	Inch	mm	M ³ /hr.			bar				~	=		Kgs
R467E06	¼	06	0.6	AL-HE30	BN	16	2	10	M36-SQ	14	10.5	738	0.57
R467E10	¾	10	1.0	AL-HE30	BN	16	2	10	M36-SQ	14	10.5	738	0.77
R467E15	½	15	1.5	AL-HE30	BN	16	2	10	M36-SQ	14	10.5	738	0.87

Valves suitable for AC and DC supply are different in characteristics and construction. No Interchanging of coils between DC to AC or AC to DC possible. DO Not INTERCHANGE COILS. **Minimum details required for submitting offer:** Size , Body material, Seating, medium name, Flow (M3/hr), pressure (bar), temp. Deg.C, coil voltage AC or DC.,Quantity (Nos), etc.

