



# SOLENOID VALVES FOR AUTOMATION



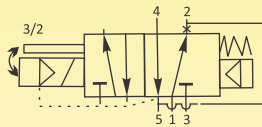
## 5/2, 3/2-WAY (CONVERTIBLE) PILOT OPERATED, NAMUR MOUNTING SINGLE SOLENOID SPOOL TYPE VALVE WITH M36-SQ COIL.

### SERIES R484E/R384E



**R484E**

Namur Single Solenoid 4- Way Valve with M36 coil



**R384E**

Namur Single Solenoid 3-Way Valve with M36 coil

#### General Description:

Series R484E & R384E Solenoid Valves are convertible 4-Way and 3-Way, Pilot Operated Solenoid Valves, requires minimum pressure differential to operate. Valves are used on application such as Pneumatic Rotary Actuator, where High Flow rate is required. They are also suitable on Air, or Gas, provided, are compatible with construction material of the valve.

**End connection:** 'G'-ISO-228 (BSP) & NPT.

**Max. Temperature range :** For media is (-)5°C & Max. with Buna Nitrile seals: 80°C. Max. ambient temperature with Class 'H' coil (+)42°C.

**Manual override :** Valve is provided with Lockable/Resettable Manual override. Valve can be operated manually to open the valve when there is No Electric supply to the coil. Manual Override consist of slotted head screw for Screw Driver with Two possible position to Open the valve and Close the valve. Manual Override is to be positioned at Close Position when valve is operated through coil.

**BEFORE ATTEMPTING ELECTRICAL OPERATION:** CHECK THE MANUAL OVERRIDE IS AT CLOSE POSITION.

**Mounting :** Valves can be mounted directly on the Pneumatic Rotary Actuator with the Screws provided as accessory.

**Application:** When using as a 5-way valve, can operate double acting actuator. When using as 3-way valve, can operate single acting, spring return actuator. While exhausting, portion of air is re-introduced in spring chamber to boost operating speed of return stroke.

**Coils :** Series R4854 & R384E Solenoid Valves are available in Class 'H' insulated (180°C) encapsulated in Thermo Plastic, containing 30% Glass filled. All coils are for continuous service for intermittent duty, 100% duty (E.D). Rated voltage tolerances are +10%/-15% for all AC power coils; +10%/-15% for DC supply. SQ-Coils are suitable for Connectors Form 'A' & 'B' (ISO4400) according to EN 175301-803 and Protection Class IP 67 as per IEC-60529-2001.

**Approvals :** M36 Coils are CE, EMI/EMC approved. Available for voltage range 220/230/240/110/48/24V 50/60Hz AC and 220/110/24 V DC. For approval information, please refer to page no.86.

#### Materials:

Valve Body : Aluminium HE 30 Hard Anodized.  
Seals/Poppets : Buna Nitrile.  
Tube Nut : St.St.  
Plunger & Stopper: AISI SS 430FR,  
Spring : AISI SS 302.  
Shading Ring : For AC: Copper, For DC: No shading ring.  
Standard Coil Type : AC – M36-SQ: 240, 110 V 50 Hz, Rating: 14 VA, DC – M36-SQ: Rating: 10.5 Watts.  
Sales Point : Valve type 3-way or 5-way is selectable by using the orientation of Plastic disc in No.2 port, (Refer to figure - 1 & 2) Overleaf.

#### NOTE

**1) Use of fine gauge filter in the inlet side is highly recommend.**

**Installation :** Valves can be mounted in any position except "Inverted", preferably in Horizontal pipeline with magnetic construction in vertical and upright position.

### SPECIFICATIONS

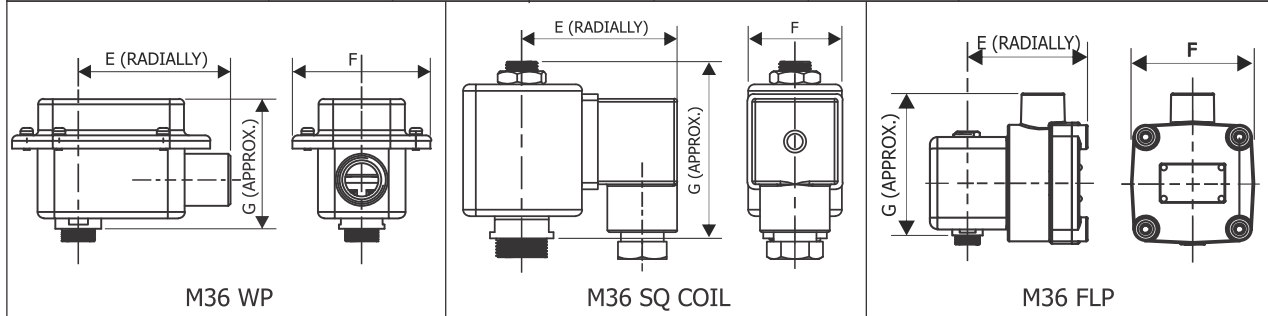
Series	Pipe Size	Orifice Size	Flow Factor Kv	Body Material	Seat	BTP	Working Pr.(bar)		Coil Type	Coil Rating		Constr. Ref.	Weight Kgs
							bar	min max		VA	Watt		
R484E/R384E	Inch	mm	M <sup>3</sup> /hr.							~	=		
R484E06	1/4	6	0.5	AL	BN	15	2	10	M36-SQ	14	10.5	756	0.470
R384E06	1/4	6	0.5	AL	BN	15	2	10	M36-SQ	14	10.5	756	0.470

**NOTE :** Valves are available with WP-IP-67 & FLP IIC-T6 +IP66 with Metallic Enclosures.



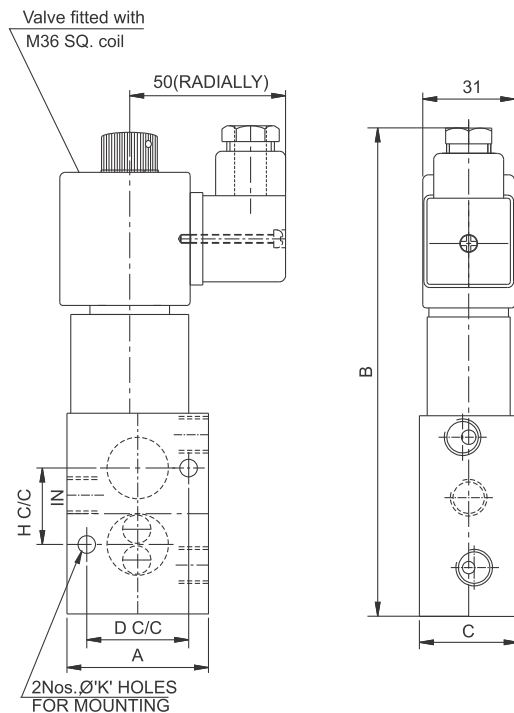
Valves suitable for AC and DC supply are different in characteristics and construction. No Interchanging of coils between DC to AC or AC to DC possible. DO NOT INTERCHANGE COILS. Minimum details required for submitting offer : Size, Body material, seating, medium name, Flow (M3/hr) pressure (bar), temp. Deg.C, coil voltage AC or DC., Quantity (Nos), etc.

COIL TYPE	POWER CONSUMPTION & WATT RATING			Class of Insulation	Protection	Certification Standard
	AC		DC			
	VA Holding	Watts	Watts			
M36-SQ-GP/SQ-WP67	13.5	8	10.5	H	GP/WP-IP-67	IS/IEC 60529-2001
M36-RD/WP67	13.5	8	10.5	H	WP-IP-67	IS/IEC 60529-2001
M36-RD/FLP-IIC + IP66/IP67	13.5	8	10.5	H	FLP-IIC+IP66/IP67	IS/IEC 60079-1-2014



DIMENSION IN (MM)							
CATALOGUE NO.	Size	A	B	C	D	H	øK
R484E06	1/4	44.5	149	31	32	24	5.5
R384E06	1/4	44.5	149	31	32	24	5.5

CONSTRUCTION REF. NO.: 756



#### List Of Approvals

APPROVAL	IP 67	TYPE 4X, 6P	Exd mb IIC T6 Gb	Exia IIC T6	Exd Tb IIC T6 Gb	DGMS	PESO
ISI	✓	✓	✓	✓	✓	✓	✓
CE	✓	✓	✓	✓	✓	✓	✓
UL	✓	✓	✓	✓	✓	✓	✓
GOST	✓	✓	✓	✓	✓	✓	✓
IECEx	✓	✓	✓	✓	✓	✓	✓
ATEX	✓	✓	✓	✓	✓	✓	✓

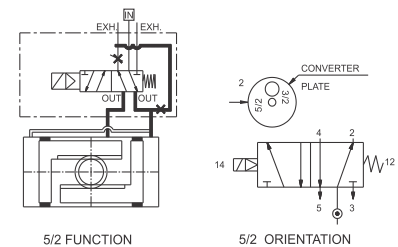


Fig - 1

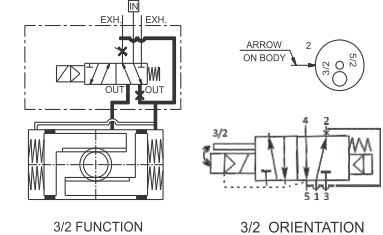


Fig - 2

CATALOGUE NO.	PIPE SIZE INCH	CONSTR. REF.	E (RADIALLY)			F			G		
			SQ	RD WP	FLP	SQ	RD WP	FLP	SQ	RD WP	FLP
			M36	M36	M36	M36	M36	M36	M36	M36	M36
R484E06	1/4	756	50	73	80	30	67	62	56	58	78
R384E06	1/4	756	50	73	80	30	67	62	56	58	78

#### Note:

Technical specifications, details & dimensions are subject to change without prior notice.  
Dimensions in the table are approximate subject to final confirmation by AVCON.

**Office At.:**  
PUNE (BR)  
NEW DELHI (BR)  
KOLKATA (BR)  
CHENNAI (BR)  
BANGALORE (BR)  
HYDERABAD (BR)  
BARODA (BR)  
MUMBAI (BR)

**Contact No.:**  
08390902673  
09810915079  
09831904444  
08939312809  
08431256574  
07995086416  
08511119967  
09810015079