

3/2-Way Midget Type, Direct Acting, Solenoid Valves.

DATA SHEET
9358B

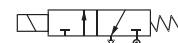
Normally Inlet Closed, Energised to Open,
De-energised to Exhaust.

SPECIFICATIONS

Sizes	: 1/4" (6 MM).
End Connections	: Standard-G-ISO-228(BSP-F) at inlet & BSP (M) at outlet. : Optional - NPT at inlet.
Body Material	: Brass forged IS 6912.
Body Test Pressure	: 40 Bar.
Max.Wkg.Pressure	: 7 Bar (Refer table below).
Seat Material	: Std. : Buna Nitrile, Optional - Viton.
Core Tube Nut	: St.St.304/St.St.316.
Plunger/Stopper	: St.St.430FR.
Spring	: St.St.302.
Shading Ring	: Copper.
Temp.(ambient)	: 32Deg.C
Max.Wkg.Temp.	: (-)5 to 80 Deg.C.
Voltage (AC)	: 230, 110, 48, 24 V - 50/60 Hz,
(DC)	: 24, 110, 240 V.
Enclosures	: General Purpose (IP20), : Weatherproof- SQ-WP-67.
Approvals	: NIL.
Differential Pr.	: 0 to 7 bar (Refer table below).
Coil Insulation	: Class 'H' upto 155Deg.C
Fluids	: Air, Gas.
Manual Override	: Available as standard feature.
Mounting Bracket	: Not Applicable.
Sales Point	: Simple, reliable economical valve for multi-million operations.
Application	: For operating Diaphragm valves. Single acting cylinders, for opening Diaphragm and Piston Type Globe, Angle seated 2-Way and 3-Way Valves.
Mounting	: In horizontal pipeline, keeping solenoid upright and vertical.
Note	: 1) Use of Filter in the inlet size is highly recommended. : 2) Not suitable for back pressure from outlet side. : 3) Not available in flameproof.



SPECIFICATION TABLE 3/2 WAY NORMALLY CLOSED

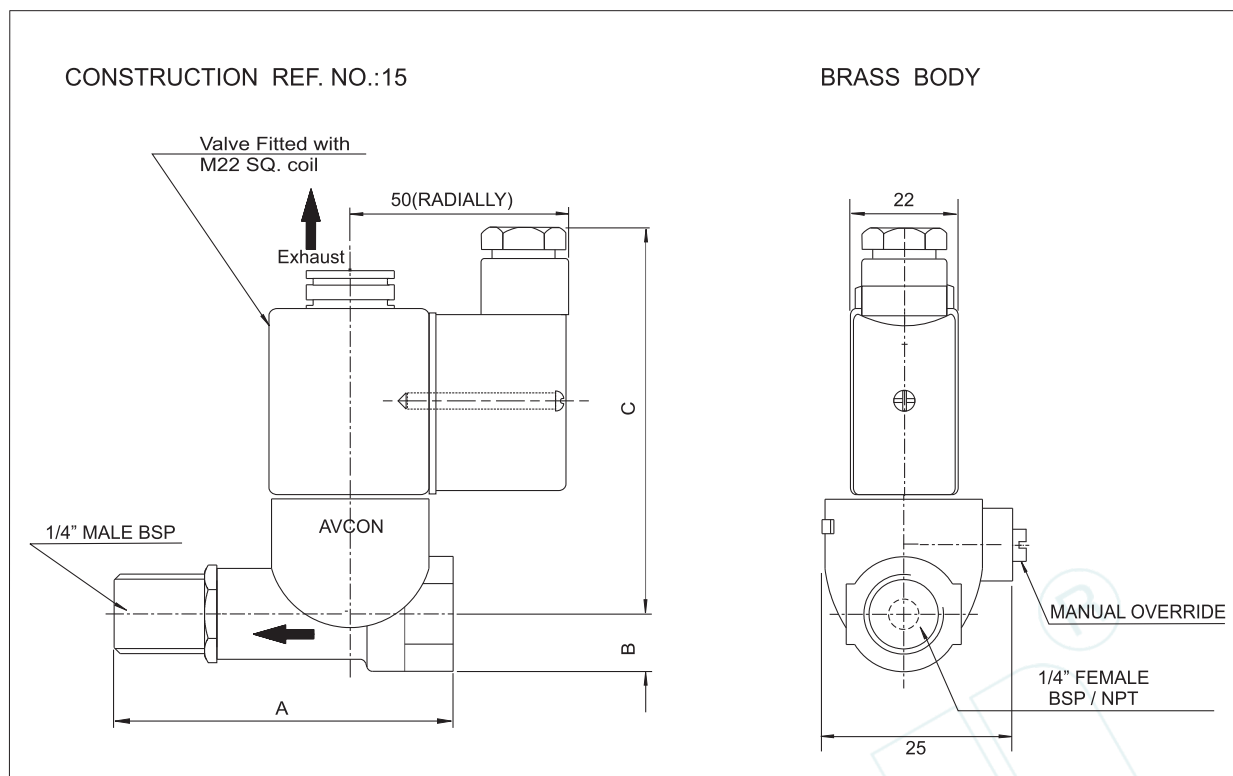


Catalogue Number	Pipe Size	Orifice Size	Flow Factor Kv	Minimum Pressure	Maximum Operating Pressure (bar)		BTP	Material		Constr. Ref.	VA Rating	Watt Rating	Coil	Housing
	Inch	mm	M³/hr.	bar	AC	DC		Body	Seat		AC	DC	Type	
					Air/Gas	Air/Gas								
9358B020	1/4"	2.0	0.08	0	6.5	7	40	BR	BN	15	9.3	5.5	M22	SQ

ELECTRICAL REFERENCE

Coil Type	Power Consumption & Watt Rating			Class of Insulation	Protection	Certification Standard
	AC		DC			
	VA Inrush	VA Holding	Watts			
M 22 SQ	12.7	9.4	5.5	H	GP/WP IP-67	IS/IEC 60529-2001

DIMENSIONS IN (MM)



Catalogue Number	Pipe Size	Constr. Ref.	A	B	C	Weight (Approx.)
	Inch					Kgs. ♦
9358B020	1/4	15	52	9.5	68	0.185

♦ Wt with GP enclosure only, ask AVCON for other weights.

Note:

Technical specifications, details & dimensions are subject to change without prior notice. Dimensions in the table are approximate subject to final confirmation by AVCON.

Ed.9358B-01-2023