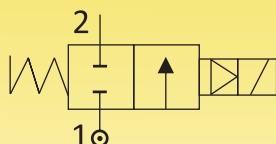




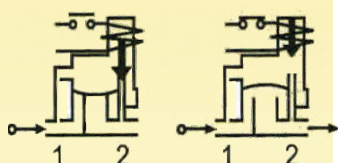
AVCON SERIES R111A SOLENOID VALVES FOR AUTOMATION

2/2 WAY – NORMALLY CLOSED – INTERNAL PILOT OPERATED WITHOUT MANUAL OVERRIDE, WITH M36 COIL.

SERIES R111A



N.C.
Normally Closed
Coil energised - Open
Coil de-energised - Closed



General Description:

Series R111A Solenoid Valves are Diaphragm Pilot Operated and require very low minimum differential pressure to operate. They are used for application with High Flow Rate. Valves are suitable for general application with media such as Water: Light Oil, Gas and Air, provided they are compatible with construction material of the valve.

End connection: 'G'-ISO-228 (BSP) & NPT.

Max. Temperature range : Working temperature for media is (-)5°C & Max. with Buna Nitrile Diaphragm: 80°C and with viton diaphragm upto 150°C. Max. ambient temperature with Class 'H' coil (+)42°C.

Mounting Bracket: Mounting Bracket available as accessory.

Coils: Series R111A Solenoid Valves are available in Class 'H' insulated (180°C) coil; encapsulated in Thermo Plastic, containing 30% Glass filled. All coils are for continuous service for intermittent 100% duty (E.D). Rated voltage tolerances are +10%/-15% for all AC power coils; +10%/-15% for DC supply. SQ-Coils are suitable for Connectors Form 'A' & 'B' (ISO4400) according to EN 175301-803 and Protection Class IP 67 as per IEC-60529-2001.

Approvals: M36 Coils are CE, EMI/EMC approved; Available for voltage range. 220/230/240/110/48/24V 50/60Hz AC and 220/110/24V DC. For approval information, please refer to page no. 2.

Materials:

Valve Body : ASTM A351 Gr.CF8 (SS304),
ASTM A351 Gr.CF8M (SS316).
Seals (Seating) : Buna Nitrile, Viton, Neoprene, Silicon.
Tube Nut : AISI SS 316
Plunger & Stopper: AISI SS 430FR
Spring : AISI SS 302
Shading Ring : For AC: Copper/Al/Silver,
For DC: No shading ring.
Standard Coil Type: AC-M36-SQ/GP/H, 240,
110 V 50 Hz, Rating:14VA,
DC-M36-SQ/GP/H,
Rating:10.5 Watts.

Note

- : 1) Use of fine gauge filter in the inlet side is highly recommended.
- : 2) Valves not recommended for installation in inlet side of Pump.
- : 3) Do not install bigger size of Solenoid Valve on smaller size pipeline.

Installation : The Valves are essentially suitable for mounting in horizontal pipeline with magnetic construction vertical and upright position. Series R111A Solenoid valves are not designed for Back Pressure coming from downstream side.



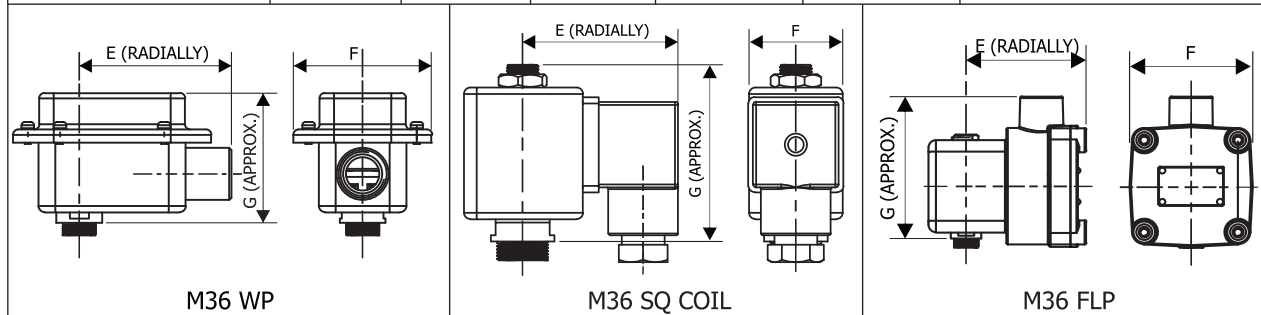
SPECIFICATIONS:

Series	Size 'G' thr	Orifice Size	Flow Factor Kv	Body Material	Seat		BTP	Working Pr.(bar)		Coil Type	Coil Rating		Constr. Ref. No	Weight
								min	max		VA	Watt		
R111A	Inch	mm	M/hr.				bar				~	=		kgs
10	3/8	15	3.0	CF8	BN	V	25	0.3	12	M36-SQ	14	10.5	701	0.530
15	1/2	15	3.0	CF8	BN	V	25	0.3	12	M36-SQ	14	10.5	701	0.560
20	3/4	20	8.0	CF8	BN	V	25	0.3	12	M36-SQ	14	10.5	701	0.880
25	1	25	9.5	CF8	BN	V	25	0.3	12	M36-SQ	14	10.5	701	0.930
35	1½	34	17.3	CF8	BN	V	25	0.3	10	M36-SQ	14	10.5	701	1.650
50	2	50	30.5	CF8	BN	V	25	0.3	10	M36-SQ	14	10.5	701	2.850

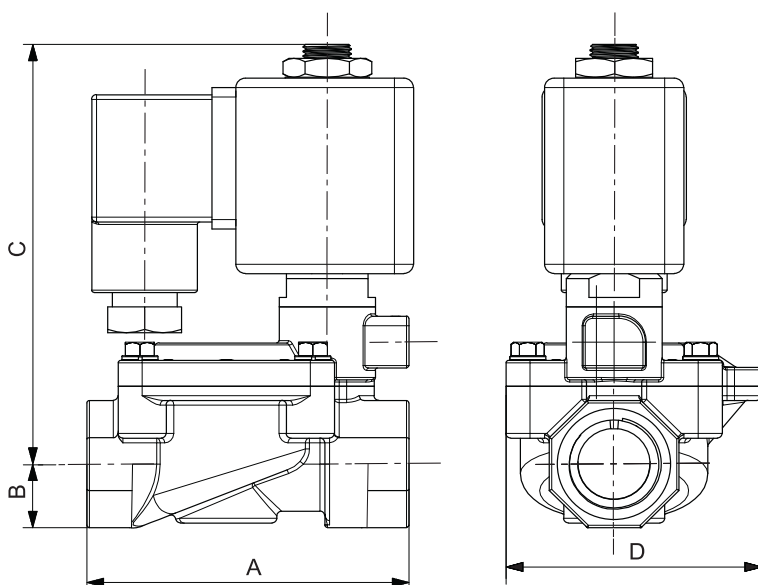
*Weight of CF8 Valve Body with SQ Coil.

NOTE : Valves suitable for AC and DC supply are different in characteristics and construction. No Interchanging of coils between DC to AC or AC to DC possible. DO NOT INTERCHANGE COILS.
Minimum details required for submitting offer : Size, Body material, seating, medium name, Flow (M3/hr) pressure (bar), temp. Deg.C, coil voltage AC or DC., Quantity (Nos), etc.

COIL TYPE	POWER CONSUMPTION & WATT RATING			Class of Insulation	Protection	Certification Standard
	AC		DC			
	VA Holding	Watts	Watts			
M36-SQ-GP/SQ-WP67	13.5	8	10.5	H	GP/WP-IP-67	IS/IEC 60529-2001
M36-RD/WP67	13.5	8	10.5	H	WP-IP-67	IS/IEC 60529-2001
M36-RD/FLP-IIC + IP66/IP67	13.5	8	10.5	H	FLP-IIC+IP66/IP67	IS/IEC 60079-1-2014



CONSTRUCTION REF. NO.: 701



List Of Approvals

APPROVAL	IP 67	TYPE 4X, 6P	Exd mb IIC T6 Gb	Exia IIC T6	Exd Tb IIC T6 Gb	DGMS	PESO
ISI	✓		✓	✓			✓
CE	✓		✓		✓		✓
UL							
ROST							
IECEX			✓		✓		
ATEX			✓		✓		

DIMENSION IN (MM)

CATALOGUE NO.	Size	A	B	C	D
R111A 06	1/4"	55	13	89	53
R111A 10	3/8"	67	13	89	53
R111A15	1/2"	69	13	89	53
R111A 20	3/4"	93	17	89	76
R111A25	1"	102	20	98	76
R111A 35	1-1/2"	132	28	127	111
R111A 50	2"	160	35	135	132

CATALOGUE NO.	PIPE SIZE INCH	CONSTR REF.	E (RADIALLY)			F			G		
			SQ	RD WP	FLP	SQ	RD WP	FLP	SQ	RD WP	FLP
			M36	M36	M36	M36	M36	M36	M36	M36	M36
R111A10	3/8	701	49	73	80	30	67	62	56	58	78
R111A15	1/2	701	49	73	80	30	67	62	56	58	78
R111A20	3/4	701	49	73	80	30	67	62	56	58	78
R111A25	1	701	49	73	80	30	67	62	56	58	78
R111A35	1-1/2	701	49	73	80	30	67	62	56	58	78
R111A50	2	701	49	73	80	30	67	62	56	58	78

Note:

Technical specifications, details & dimensions are subject to change without prior notice.
Dimensions in the table are approximate subject to final confirmation by AVCON.

WESTERN		
Mumbai Plot No. 65, Road No. 13, MIDC Marol, Andheri (East), Mumbai - 400 093 Tel.No.: 022-6915 6100 / 83909 17431 E-mail : acplmumbai.sales@avconcontrols.com	Pune Plot No. T - 108, MIDC Bhosari, Pune - 411 026. Maharashtra (INDIA). Tel.No.: 020-2712 0776 / 2712 0540 E-mail : acplmumbai.sales@avconcontrols.com	Baroda 307, Mangaldeep Complex, Sampatrao Colony, Productivity Road, Baroda - 390 005. Tel.No.: 022-6915 6100 / 83909 17431 E-mail : acplmumbai.sales@avconcontrols.com

EASTERN	
Kolkata 720, 7th Floor, 33/1, N.S. Road, Marshall House, Kolkata-700 001. Tel.No.: 033-4068 1180 / 77109 00889 E-mail : acplmumbai.sales@avconcontrols.com	

SOUTHERN		
Chennai 249, First Floor, Tiny Sector Ambattur Industrial Estate, Chennai - 600 058 Tel.No.: 044-4807 4107 / 089393 12809 E-mail : acplmumbai.sales@avconcontrols.com	Hyderabad SSR ENCLAVE, Plot No. 81, Road No.4, Vasanth Nagar, Nizampet X Roads (Near JNTU College Metro Station.) Hyderabad - 500085. Tel.No.: 7995086416 E-mail : acplmumbai.sales@avconcontrols.com	Bangalore Tel.No.: 084312 56574 E-mail : acplmumbai.sales@avconcontrols.com

NORTHERN	
New Delhi Unit No. 708, 7th Floor, 94 Meghdoot, Nehru Place, New Delhi - 110019 Tel.No.: 011-42639736 / 88282 69844 E-mail : acplmumbai.sales@avconcontrols.com	