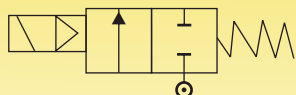




# AVCON SERIES R641K SOLENOID VALVES FOR AUTOMATION

**2/2 WAY – NORMALLY CLOSED – INTERNAL PILOT OPERATED WITHOUT MANUAL OVERRIDE.**

## SERIES R641K

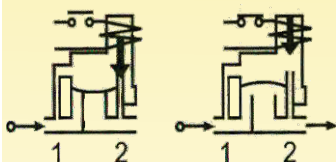


**N.C.**

**Normally Closed**

Coil energised - Open

Coil de-energised - Closed



### General Description:

Series R641K Solenoid Valves are Diaphragm Pilot Operated and require very low minimum differential pressure to operate. Valves are used for application where High Flow Rate is required. Valves are suitable for general application with media such as Water at room temperature. Filtered Water without suspended or dissolved impurities must be used.

**End Connection:** RP (1507/1) BSPT.

**Max. Temperature Range:** Working temperature for media is (-)5°C & Max. with EPDM Diaphragm: 80°C. Max. ambient temperature with Class 'H' coil (+)42°C. temperature range of fluid: Minimum (-)5°C and maximum 65°C.

**Manual override:** Not available.

**Mounting:** Valves are self mountable on pipeline.

**Coils:** Series R641K Solenoid Valves with M30 having typical characteristics of Pulse to Close, Pulse to Open function. Solenoid need not be energized throughout. Coils are available in Class 'H' insulated (180°C) coil; encapsulated in Thermo Plastic containing 30% Glass filled.

Rated voltage : 24V DC ( ± 10 %)

Coil consumption : 2 Watts.

Tolerance limit : (+)3/(-)3 Volts.

For switching circuit : Refer to Connection Diagram.

### Materials:

Size : 50 mm (2") to 80 mm (3") BSPT.

Valve Body : Glass filled Nylon PA6.

Seals (Seating) : EPDM.

Tube Nut : St.St. 316.

Plunger & Stopper : AISI SS 430 FR.

Spring : AISI SS 302

Shading Ring : DC: No shading ring.

Standard Coil Type : DC-M30-RD.

Rating: 2 Watts.

Sales Points : Most reliable maintenance free on-off valve for low cost automation.

### Note

**: 1) Normally Open design Not Available.**

**: 2) Use of fine gauge filter in the inlet side is highly recommended.**

**3) Do not install bigger size of Solenoid Valve on smaller size pipeline.**

**Installation:** Valves can be mounted in any position, except "Inverted", preferably in Horizontal pipeline with magnetic construction in vertical and upright position.

Series R641K Solenoid Valves are not designed for Back Pressure coming from downstream side.

**CAUTION: VALVES ARE NOT TO BE USED ON OIL, STEAM, FUEL GAS, HOT WATER, WATER BELOW (-)15°C, VIBRATING MACHINERY.**

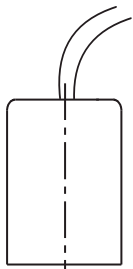
## SPECIFICATIONS:

Series	Size 'G'thr	Orifice Size	Flow Factor Kv	Body Material	Seat	Working Pr.(bar)		Coil Type	Coil Rating		Constr. Ref. No	Weight kgs
						230V AC	24V DC		VA	Watt		
R641K	Inch	mm	M <sup>3</sup> /hr.			min	max					
50	2	50	40	PA 6	EPDM	1	10	M30	-	2	761	1.05
65	2½	65	82	PA 6	EPDM	1	10	M30	-	2	761	1.55
80	3	80	90	PA 6	EPDM	1	10	M30	-	2	761	1.65
100	4	100		Under Development								

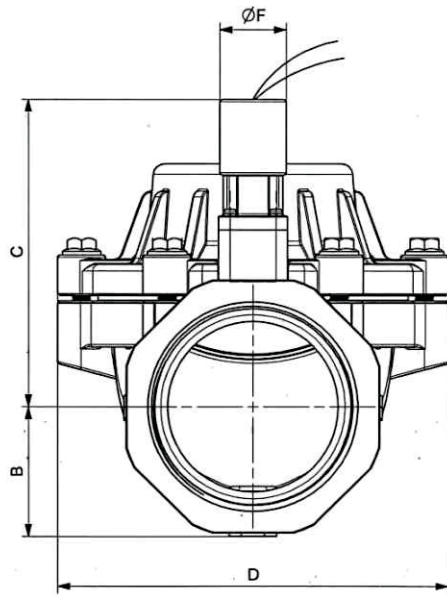
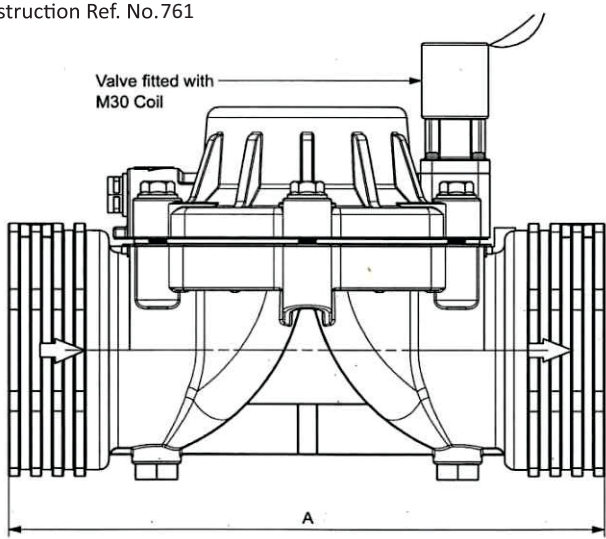


Minimum details required for submitting offer : Size, Body material, seating, medium name, Flow (M3/hr), pressure (bar), temp. Deg.C, coil voltage DC.,Quantity (Nos), etc.

COIL TYPE	POWER CONSUMPTION & WATT RATING			Class of Insulation	Protection	Certification Standard
	AC		DC			
	VA Holding	Watts	Watts			
M30	—	—	2	H	WP-IP-67	Approval Awaited

 M30 COIL	CATALOGUE NO.	Size (Inch)	DIMENSION IN MM.				
			A	B	C	D	ØF
	R641K 50	2	205	52	118	134	29
	R641K 65	2½	240	57	134	170	29
	R641K 80	3	257	57	134	170	29
	R641K 100	4	Under Development				

Construction Ref. No.761



**Note:**  
Technical specifications, details & dimensions are subject to change without prior notice.  
Dimensions in the table are approximate subject to final confirmation by AVCON.

WESTERN		
<b>Mumbai</b> Plot No. 65, Road No. 13, MIDC Marol, Andheri (East), Mumbai - 400 093 Tel.No.: 022-6915 6100 / 83909 17431 E-mail : acplmumbai.sales@avconcontrols.com	<b>Pune</b> Plot No. T - 108, MIDC Bhosari, Pune - 411 026. Maharashtra (INDIA). Tel.No.: 020-2712 0776 / 2712 0540 E-mail : acplmumbai.sales@avconcontrols.com	<b>Baroda</b> 307, Mangaldeep Complex, Sampatrao Colony, Productivity Road, Baroda - 390 005. Tel.No.: 022-6915 6100 / 83909 17431 E-mail : acplmumbai.sales@avconcontrols.com

EASTERN	
<b>Kolkata</b> 720, 7th Floor, 33/1, N.S. Road, Marshall House, Kolkata-700 001. Tel.No.: 033-4068 1180 / 77109 00889 E-mail : acplmumbai.sales@avconcontrols.com	

SOUTHERN		
<b>Chennai</b> 249, First Floor, Tiny Sector Ambattur Industrial Estate, Chennai - 600 058 Tel.No.: 044-4807 4107 / 089393 12809 E-mail : acplmumbai.sales@avconcontrols.com	<b>Hyderabad</b> SSR ENCLAVE, Plot No. 81, Road No.4, Vasanth Nagar, Nizampet X Roads (Near JNTU College Metro Station.) Hyderabad - 500085. Tel.No.: 7995086416 E-mail : acplmumbai.sales@avconcontrols.com	<b>Bangalore</b> Tel.No.: 084312 56574 E-mail : acplmumbai.sales@avconcontrols.com

NORTHERN	
<b>New Delhi</b> Unit No. 708, 7th Floor, 94 Meghdoot, Nehru Place, New Delhi - 110019 Tel.No.: 011-42639736 / 88282 69844 E-mail : acplmumbai.sales@avconcontrols.com	